



PROTEC

G.T.

Ford Mondeo Mk3 Flywheel Replacement Guide

Kit Numbers: 1040775 and 1040815

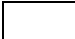

TECHNICAL INFORMATION

* The date of manufacture can be worked out from registration lookup or the 11th and 12th digits of the VIN.

** If the 11th and 12th digits are 2R, 2A, 2G use 1040775.

*** If the 11th digit is a 3,4,5,6, or 7 also use 1040775.

Year	Jan	Feb	Mar	Apr	May	Jun	Jul	Aug	Sep	Oct	Nov	Dec
1999	XC	XK	XD	XE	XL	XY	XS	XT	XJ	XU	XM	XP
2000	YB	YR	YA	YG	YC	YK	YD	YE	YL	YY	YS	YT
2001	1J	1J	1U	1P	1B	1R	1A	1G	1C	1K	1D	1E
2002	2L	2Y	2S	2T	2J	2U	2M	2P	2B	2R	2A	2G
2003	3C	3K	3D	3E	3L	3Y	3S	3T	3J	3U	3M	3P

 Unshaded = 1040815
 Shaded = 1040775



PROTEC

G.T.

Ford Mondeo Mk3 Flywheel Replacement Guide

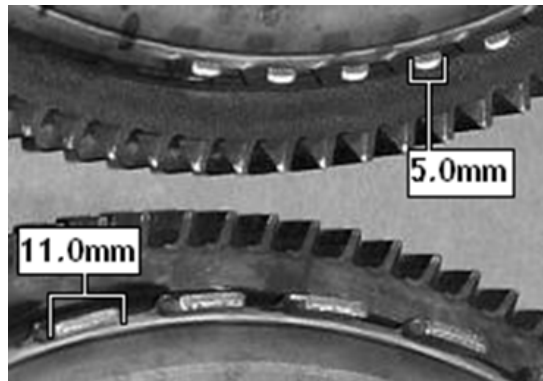
Kit Numbers: 1040775 and 1040815

TECHNICAL INFORMATION

The difference between the two types of flywheel is down to the pickup sensor in the vehicle.

If the flywheel has timing lugs that **do not** match the on board pickup then the vehicle will not start.

The timing lugs on the original flywheel are shown below:



If the 115hp TDDi is fitted with flywheel using 11mm timing lugs use 1040815

If the 115/130hp TDCi is fitted with flywheel using 5mm timing lugs use 1040775.



PROTEC

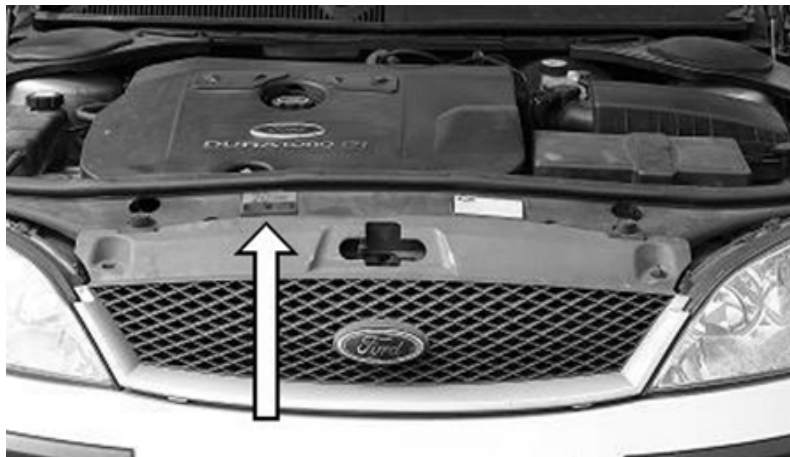
G.T.

Ford Mondeo Mk3 Flywheel Replacement Guide

Kit Numbers: 1040775 and 1040815

TECHNICAL INFORMATION

If you can't find the engine output on a standard VRM lookup you can normally find it on a label under the bonnet.



Look for either 85Kw/ 115hp or 96Kw/130hp.